

Occupancy Monitor

Setup Guide

Prepared By:

InReality, LLC.

Confidential Information Disclaimer:

This document contains certain confidential and valuable information in the form of ideas, know-how, concepts, processes, plans and trade secrets that belong to InReality, LLC. This confidential information shall not be disclosed to outside parties, agencies or vendors and shall not be duplicated, used or disclosed in whole or in part for any purpose. This document or idea cannot be used to develop or implement a solution or product without the consent of InReality, LLC.

Most Recent Version:

March 2021

1- Setup: AOI/Layout/Venue & Device

AOI:

- Include as many gates as necessary for the occupancy monitor. Ensure that the data sources added are Traffic (InReality)
- Add at least 1 endpoint (digital signage, this will display occupancy count). Add as many endpoints as required (if the customer wants to display the same occupancy display across several devices)

Layout:

- Include at least one Master Controller and assign the cameras/gates to the Master Controller. Assign the digital signage endpoint to the Master Controller, unless specified otherwise by the client (in the case that the Master Controller will not be displaying the Occupancy presentation). If multiple computers are displaying the Occupancy presentation, add the applicable number of sensor controllers and assign the digital signage endpoints to them.

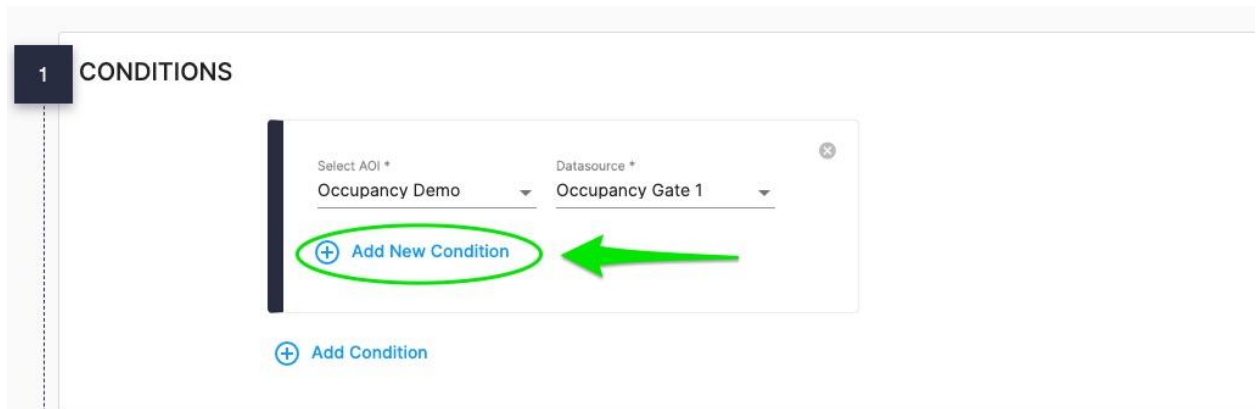
Venue:

- Assign the device using the cameras as the Master Controller, and all of the other devices displaying the occupancy presentation as sensor controllers (if they exist).
- Obtain Serial ID command: `sudo lsusb -v | grep iSerial`

2- Rules Setup

Conditions:

1. Select AOI = AOI that the occupancy monitor is using
2. Datasource: The gate used by the occupancy monitor (need to create 2 rules for every gate used by the occupancy monitor: an increasing count, and a decreasing count)
3. Select +Add New Condition



- a.
4. Data Point = Type
5. Operator = "="
6. Value = Enter for increasing count, Exit for decreasing count (need to set up 1 rule for both)

Actions:

1. 1st Action:
 - a. Select AOI = STATUS
 - b. Variable = OCCUPANCY_Store Occupancy
 - c. Operator = Increase or Decrease (depending on Rule)
2. 2nd Action: Same for all rules
 - a. Select AOI = STATUS
 - b. Variable = OCCUPANCY_THRESHOLD_Store Occupancy
 - c. Operator = CONST
 - d. Value = 5 (or whatever threshold value the customer desires)

Select "Publish Rule", select the Occupancy Venue which utilizes them, then Publish

3- Presentation Setup

Shown below is an example of a Presentation:

West Lobby Men's Restroom

6
People in the Restroom
Occupancy limit of 8

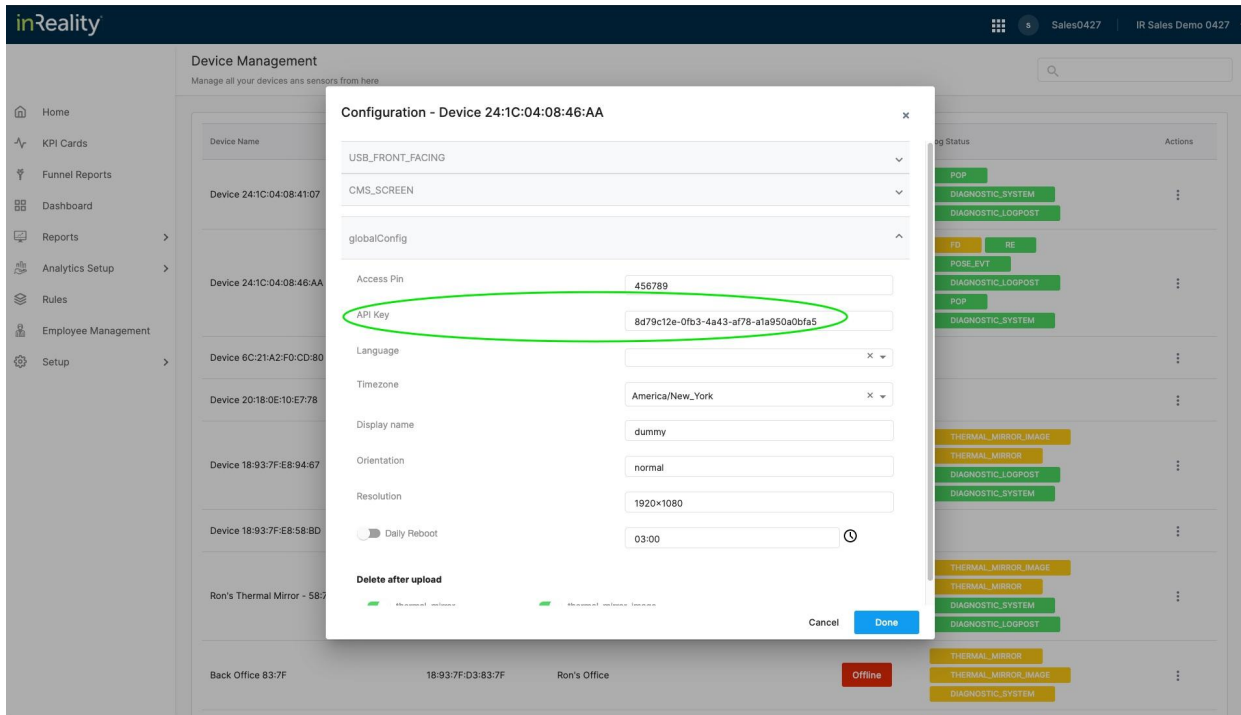
25
Minutes Since Last Cleaning
1 hour 35 minutes until next cleaning

We're working to keep you safe.
We clean and sanitize each restroom every 2 hours.
To report a concern or learn more, go to: bit.ly/WLMR2

Download Occupancy HTML5 Presentation:

<https://drive.google.com/file/d/18kru7LTrUjgHYeGvByxXupiSK6RriHLj/view?usp=sharing>

Unzip, then edit scripts/config.js to reflect the IP of the Master Controller (keep as “localhost” if the presentation will only be played on the Master Controller, change to the static IP of the Master Controller if playing on a different device) and its api key, which can be found in the globalConfig settings (Devices page found in Bento menu):



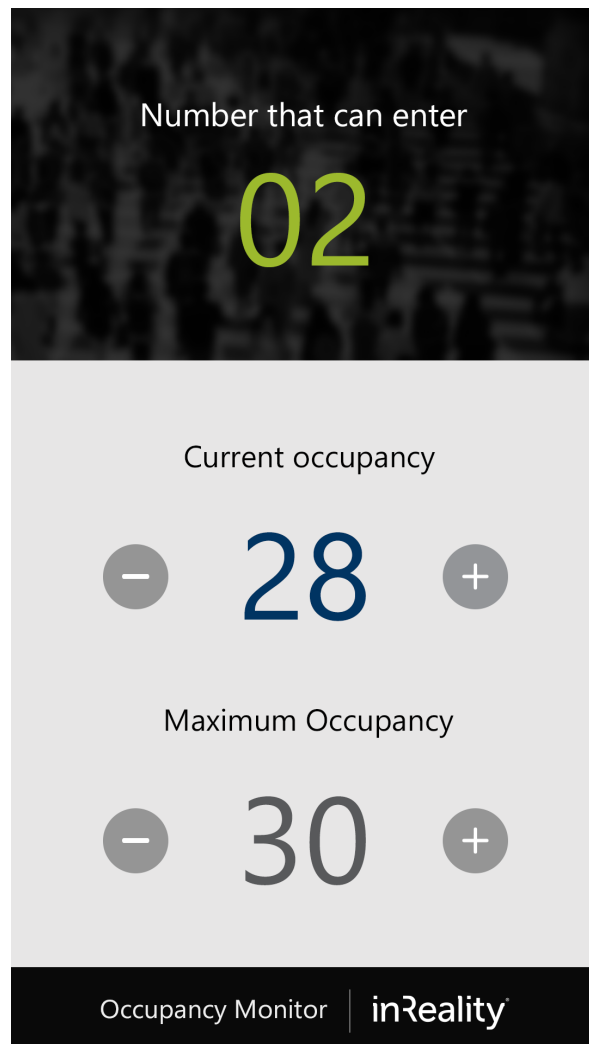
Then zip the contents and upload to the CMS (need to zip the contents from within the folder). Create a new presentation and add the HTML5 content. Resize the content to fit the screen, and then save and exit the presentation. Create a new campaign for the occupancy monitor display(s), include all of the relevant devices, select the Occupancy presentation, then publish.

4- Occupancy Manager - Mobile Web App

Control monitor settings from a tablet or phone

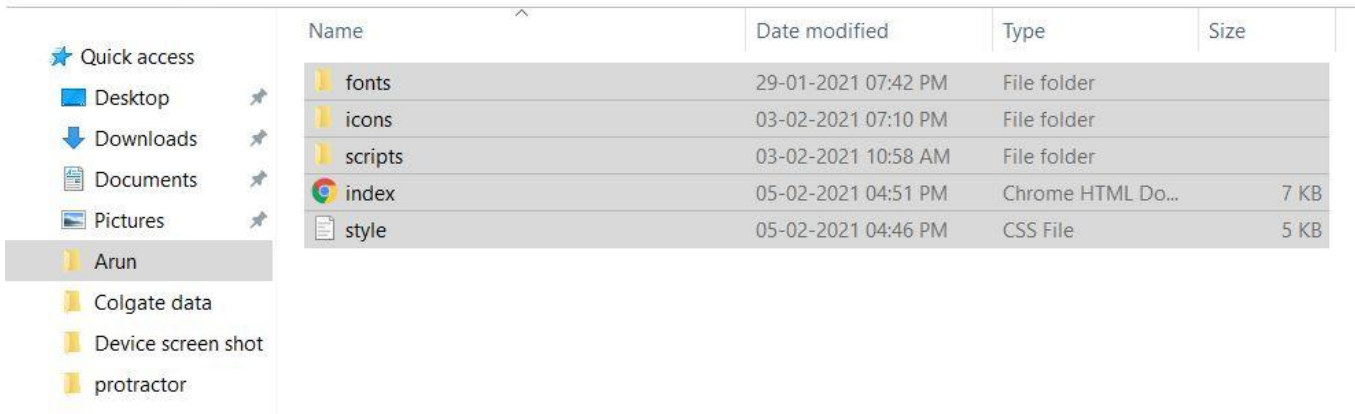
- URL - http://<Edge_Device_IP>:8964
- Password 456789
- URL - <http://192.168.68.156:8964>

Shown below is an example of the Occupancy Manager, Mobile web App:

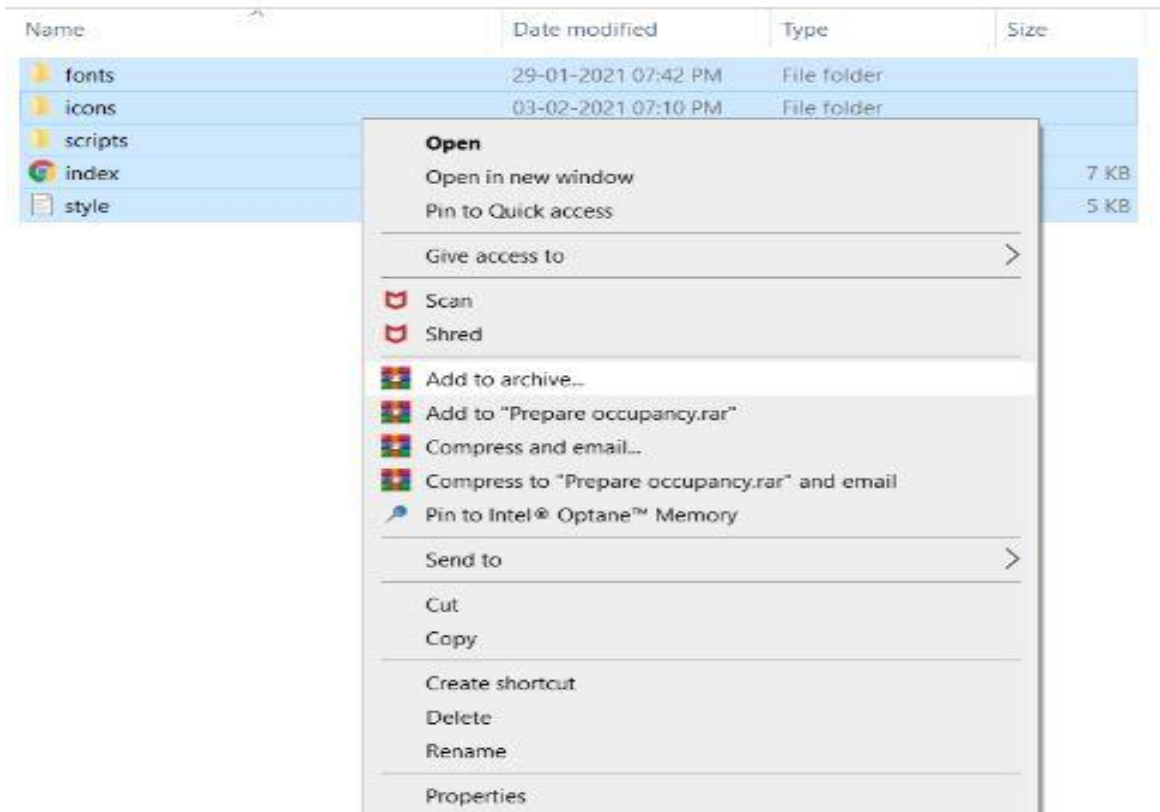


5- HTML5 Widget: Prepare Occupancy Monitor Widget

Step 1: Select all files(fonts,icons,scripts,index.html,style)



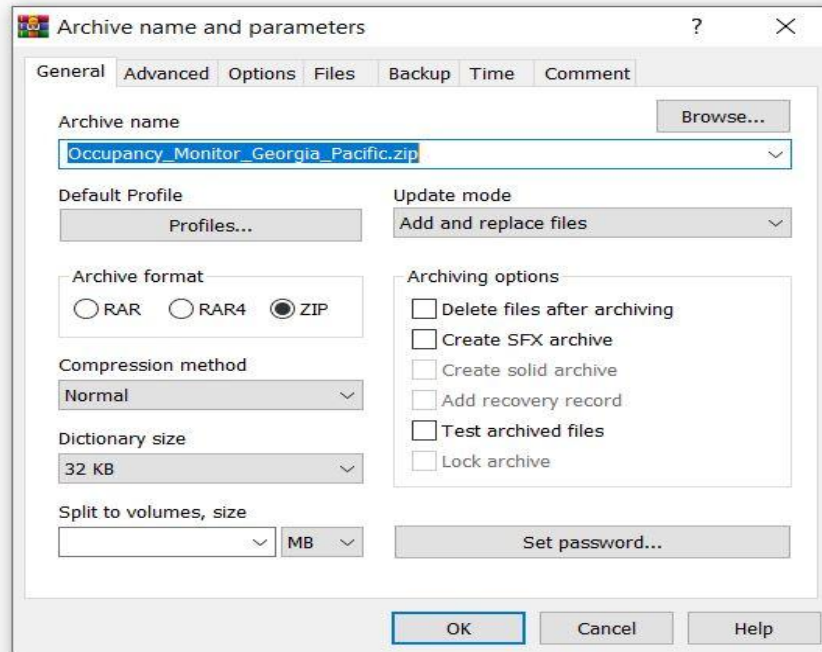
Step 2: Right-click to select Add to archive



Note: Do not put the above files in a folder and archive the folder. In that case the widget will not work and you won't be able to upload the widget to CMS.

Step 3: Enter the zip file name and select Archive format 'zip'

Name	Date modified	Type	Size
fonts	29-01-2021 07:42 PM	File folder	
icons	03-02-2021 07:10 PM	File folder	
scripts	03-02-2021 10:58 AM	File folder	
index	05-02-2021 04:51 PM	Chrome HTML Do...	7 KB
style	05-02-2021 04:46 PM	CSS File	5 KB



Step 4: Zip file created

Name	Date modified	Type	Size
fonts	29-01-2021 07:42 PM	File folder	
icons	03-02-2021 07:10 PM	File folder	
scripts	03-02-2021 10:58 AM	File folder	
index	05-02-2021 04:51 PM	Chrome HTML Do...	7 KB
Occupancy_Monitor_Georgia_Pacific	02-03-2021 10:16 AM	Compressed (zipp...	340 KB
style	05-02-2021 04:46 PM	CSS File	5 KB

6- Application Versions

- Rules Engine: rules-engine_1.1.0-6.cpk
- AVA: python-ava_Ubuntu_x64_2.4.0_r.cpk
- RCE: linux-dsp-player_U16.04-x64_4.1.2.sprint-JULY_RULE.cpk